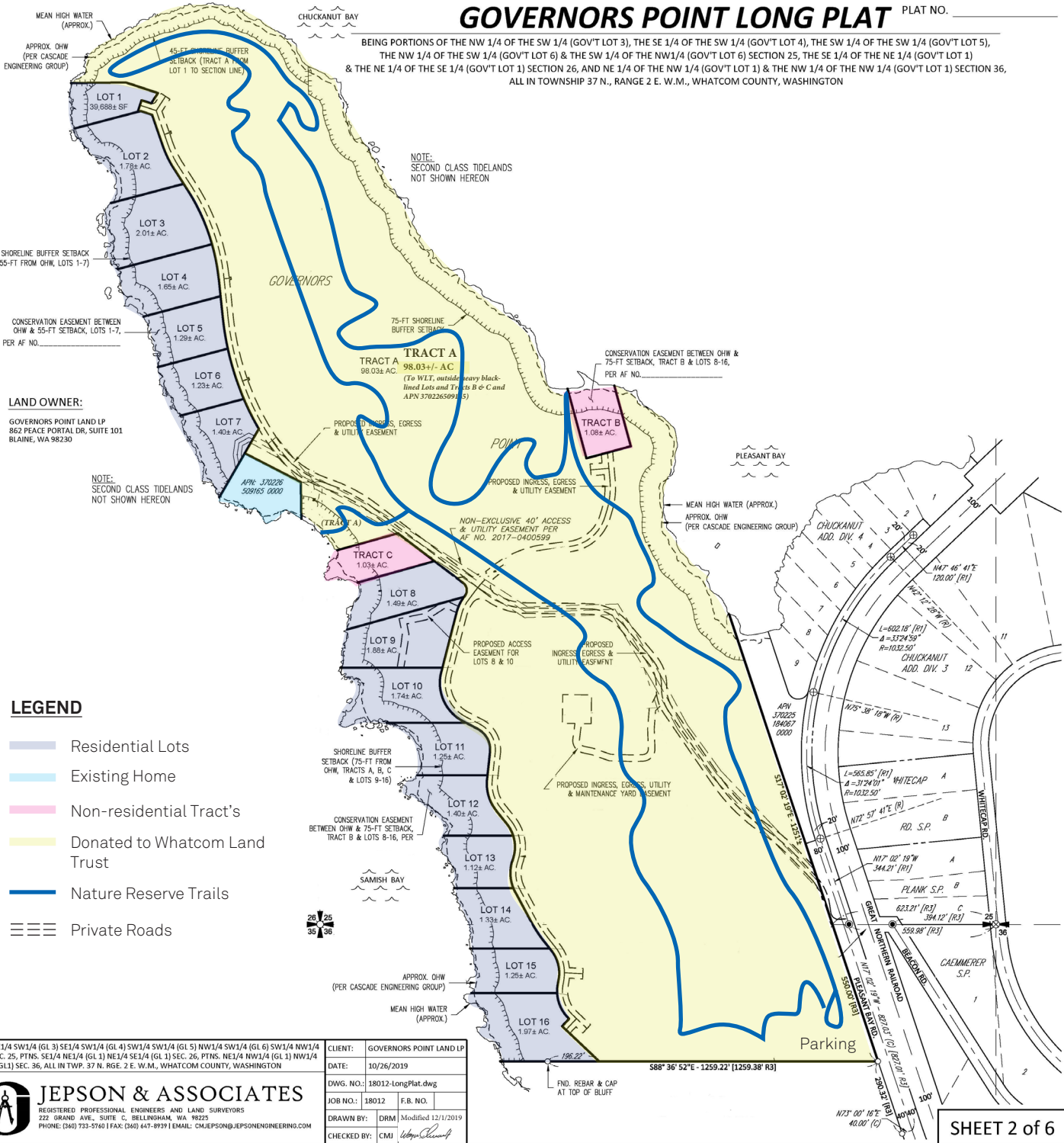


GOVERNORS POINT LONG PLAT

PLAT NO. _____

BEING PORTIONS OF THE NW 1/4 OF THE SW 1/4 (GOV'T LOT 3), THE SE 1/4 OF THE SW 1/4 (GOV'T LOT 4), THE SW 1/4 OF THE SW 1/4 (GOV'T LOT 5), THE NW 1/4 OF THE SW 1/4 (GOV'T LOT 6) & THE SW 1/4 OF THE NW 1/4 (GOV'T LOT 6) SECTION 25, THE SE 1/4 OF THE NE 1/4 (GOV'T LOT 1) & THE NE 1/4 OF THE SE 1/4 (GOV'T LOT 1) SECTION 26, AND NE 1/4 OF THE NW 1/4 (GOV'T LOT 1) & THE NW 1/4 OF THE NW 1/4 (GOV'T LOT 1) SECTION 36, ALL IN TOWNSHIP 37 N., RANGE 2 E. W.M., WHATCOM COUNTY, WASHINGTON



LEGEND

- Residential Lots
- Existing Home
- Non-residential Tract's
- Donated to Whatcom Land Trust
- Nature Reserve Trails
- Private Roads

PTNS. NE1/4 SW1/4 (GL 3) SE1/4 SW1/4 (GL 4) SW1/4 SW1/4 (GL 5) NW1/4 SW1/4 (GL 6) SW1/4 NW1/4 (GL 6) SEC. 25, PTNS. SE1/4 NE1/4 (GL 1) NE1/4 SE1/4 (GL 1) SEC. 26, PTNS. NE1/4 NW1/4 (GL 1) NW1/4 NW1/4 (GL 1) SEC. 36, ALL IN TWP. 37 N. RGE. 2 E. W.M., WHATCOM COUNTY, WASHINGTON	CLIENT: GOVERNORS POINT LAND LP DATE: 10/26/2019 DWG. NO.: 18012-LongPlat.dwg JOB NO.: 18012 F.B. NO. _____ DRAWN BY: DRM Modified 12/17/2019 CHECKED BY: CMJ <i>CMJ</i>
--	---

JEPSON & ASSOCIATES
 REGISTERED PROFESSIONAL ENGINEERS AND LAND SURVEYORS
 222 GRAND AVE., SUITE C, BELLINGHAM, WA 98225
 PHONE: (360) 733-5760 | FAX: (360) 647-8939 | EMAIL: CMJ@JEPSONENGINEERING.COM